



LET'S TAKE A WALK- A DATA WALK!

Presented by:

Jennifer Eblen Manning, M.S.W., Program Director

Grace M. Smith, M.A., Research Data Analyst

Candace J. Thier, Ed.D., Research Data Analyst

FOSTER CARE UTILIZATION REVIEW PROGRAM

(FCURP)



WHAT is a DATA WALK?

- A leadership and CQI tool
- A creative and interactive way of:
 - Sharing data and ideas
 - Exchanging resources, and
 - Encouraging active engagement around an identified problem



WHAT is a DATA WALK?

- Uses Data Stations
- Small groups walk the data
- Large group discussion and improvement planning

(Source: Annie E Casey Foundation)



WHY use a DATA WALK?

- To make key data and findings on current standing **accessible** to stakeholders
- To ensure a more **robust analysis** and understanding of the data
- To identify what **additional data** might be needed

(Sources: The Urban Institute & Annie E. Casey Foundation)



WHY use a DATA WALK?

- To help groups reach agreement on **strategies, goals, and progress**
- To help **inform** better programming and policies
- To **inspire** individual and collective action

(Sources: The Urban Institute & Annie E. Casey Foundation)



WHY use a DATA WALK?

- To look for **disparities** through breaking down data by demographics to help participants identify disparities in the target population and to use data as a jumping-off point to discuss ways to address **inequities**

(Source: Annie E. Casey Foundation)



LET'S GO!



DATA WALK DIRECTIONS

- Break into small groups (count off by 5)
- Each group will have 5 minutes at each station
- At each station, consider the data: **What surprises you? What is the good news? What is the bad news? What can I/we do about this?**
- Write down any questions or comments you want on sticky notes, and leave them on the corresponding poster board



DATA WALK STATIONS

STATION 1: Child Demographics

STATION 2: Perpetrator Demographics

STATION 3: Maltreatment Information

STATION 4: Narrative Examples of Neglect

STATION 5: Narrative Examples of Abuse

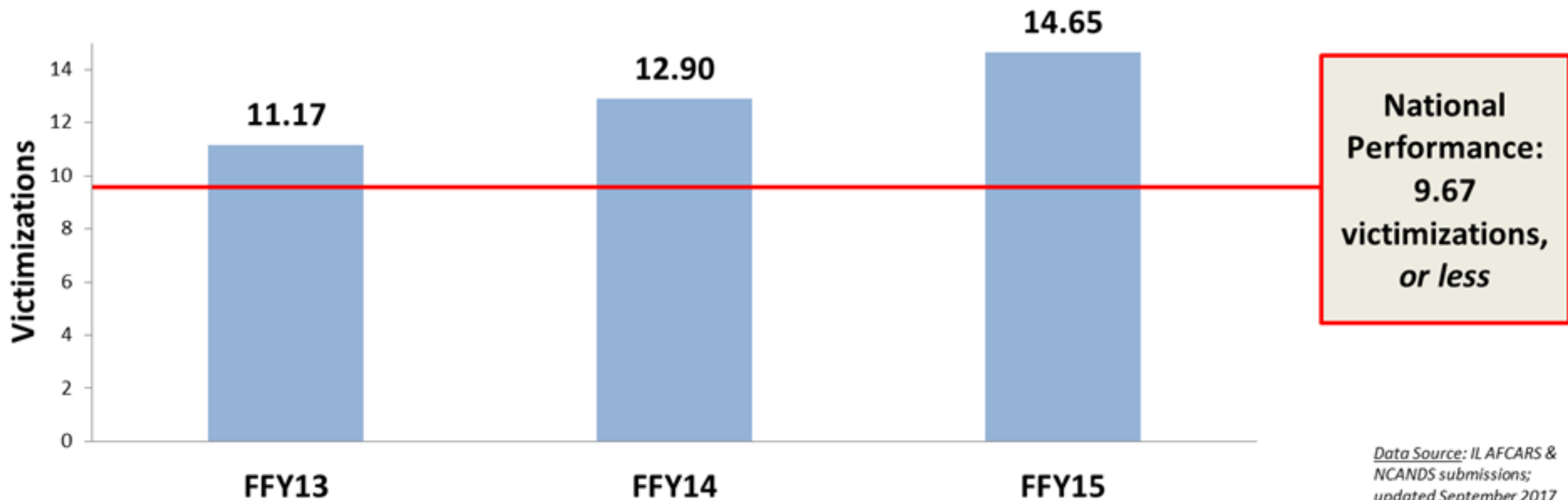


The Problem: More Children are Being Maltreated in Substitute Care

MALTREATMENT IN FOSTER CARE

(S1) Of all children in foster care during a 12-month period, what is the rate of victimization per day of foster care?
(rate of victimizations)

■ IL Risk Standardized Performance (RSP)*



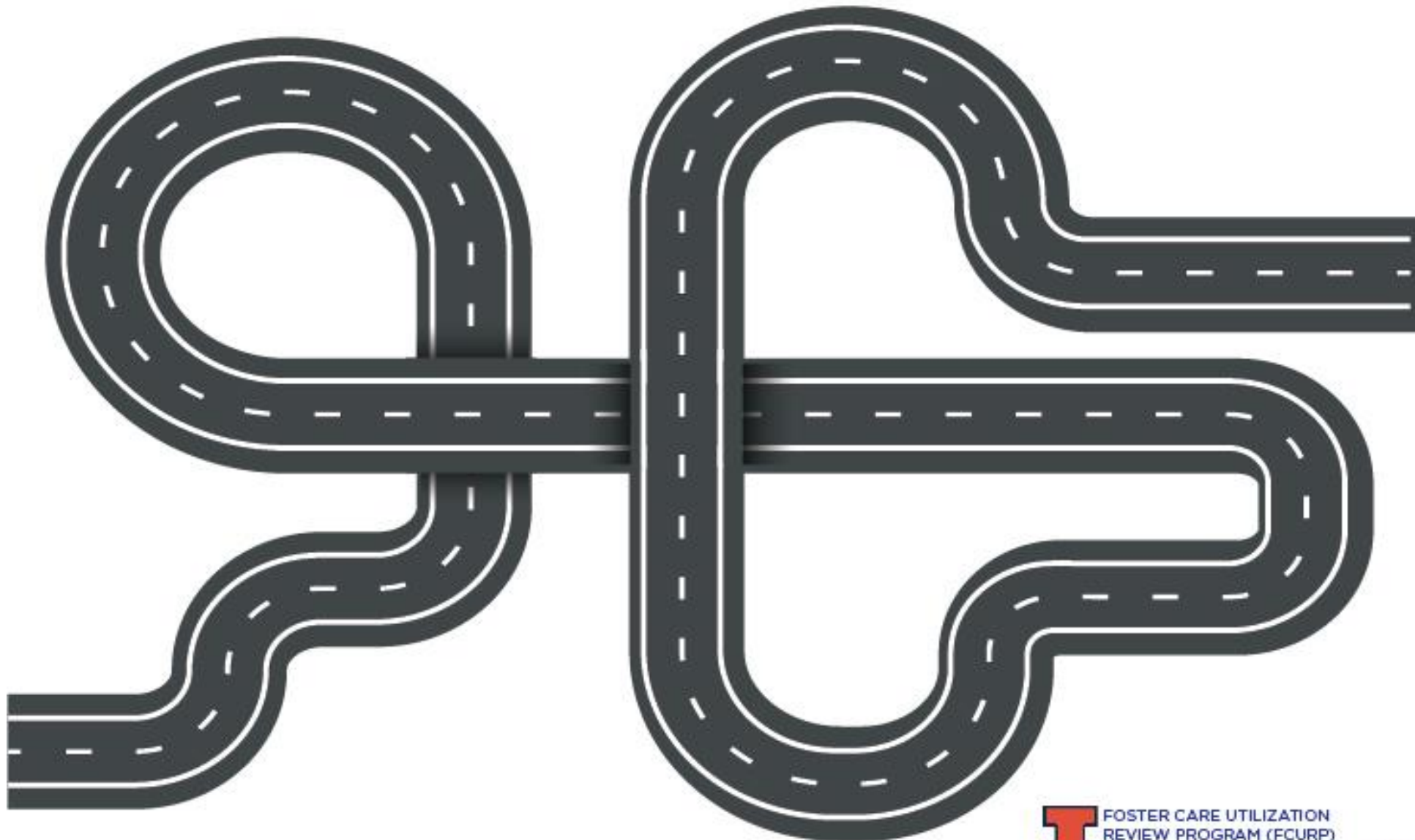


PROCESSING the DATA WALK

- What was your experience going on this Data Walk?
- What did you notice about the data?
- What group interactions did you notice?
- Did you have an emotional reaction to the data?
- What next steps would you take if this was your data walk?

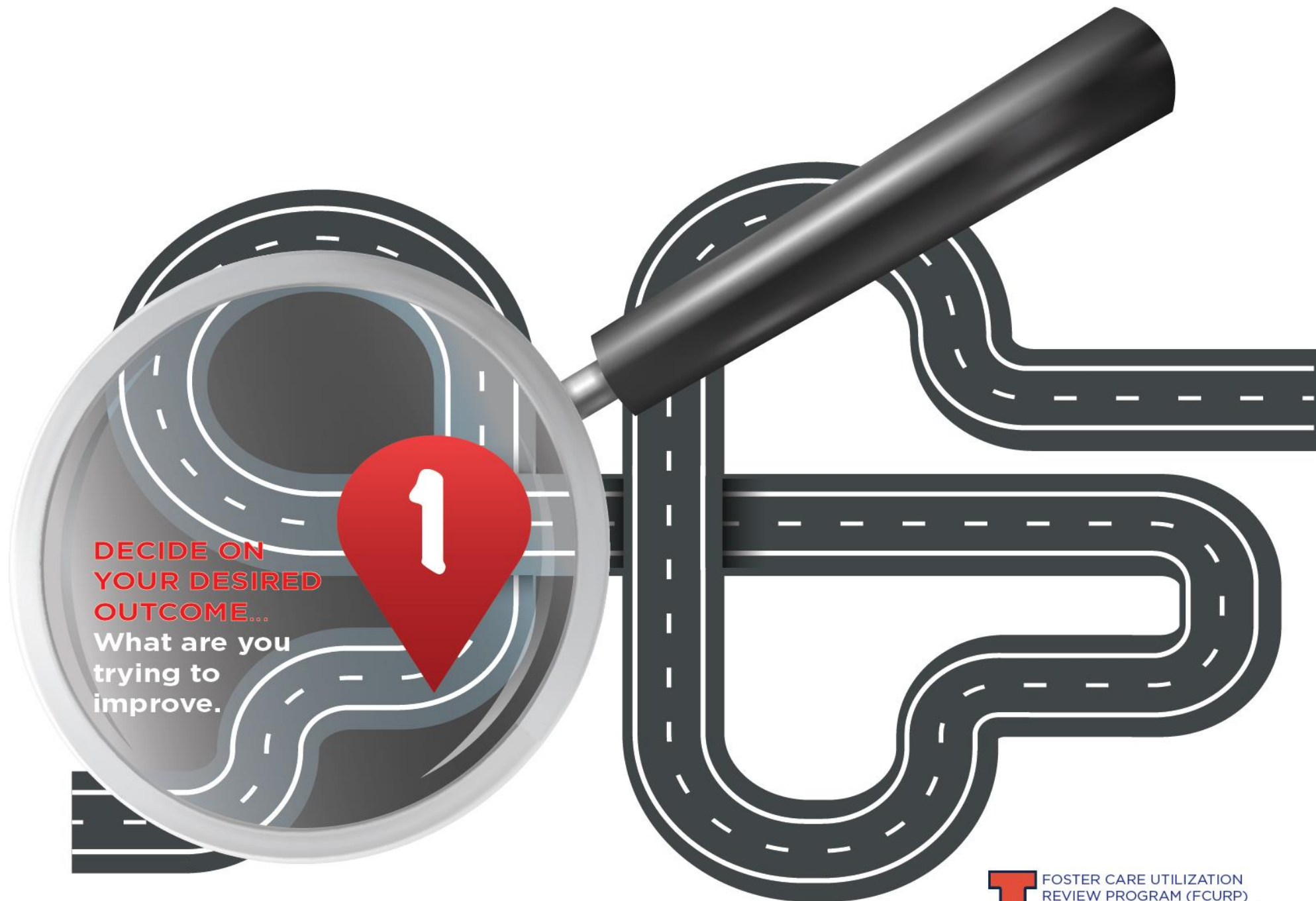


How do I do a DATA WALK?





How do I do a DATA WALK?



**DECIDE ON
YOUR DESIRED
OUTCOME...**

What are you
trying to
improve.



How do I do a DATA WALK?

2

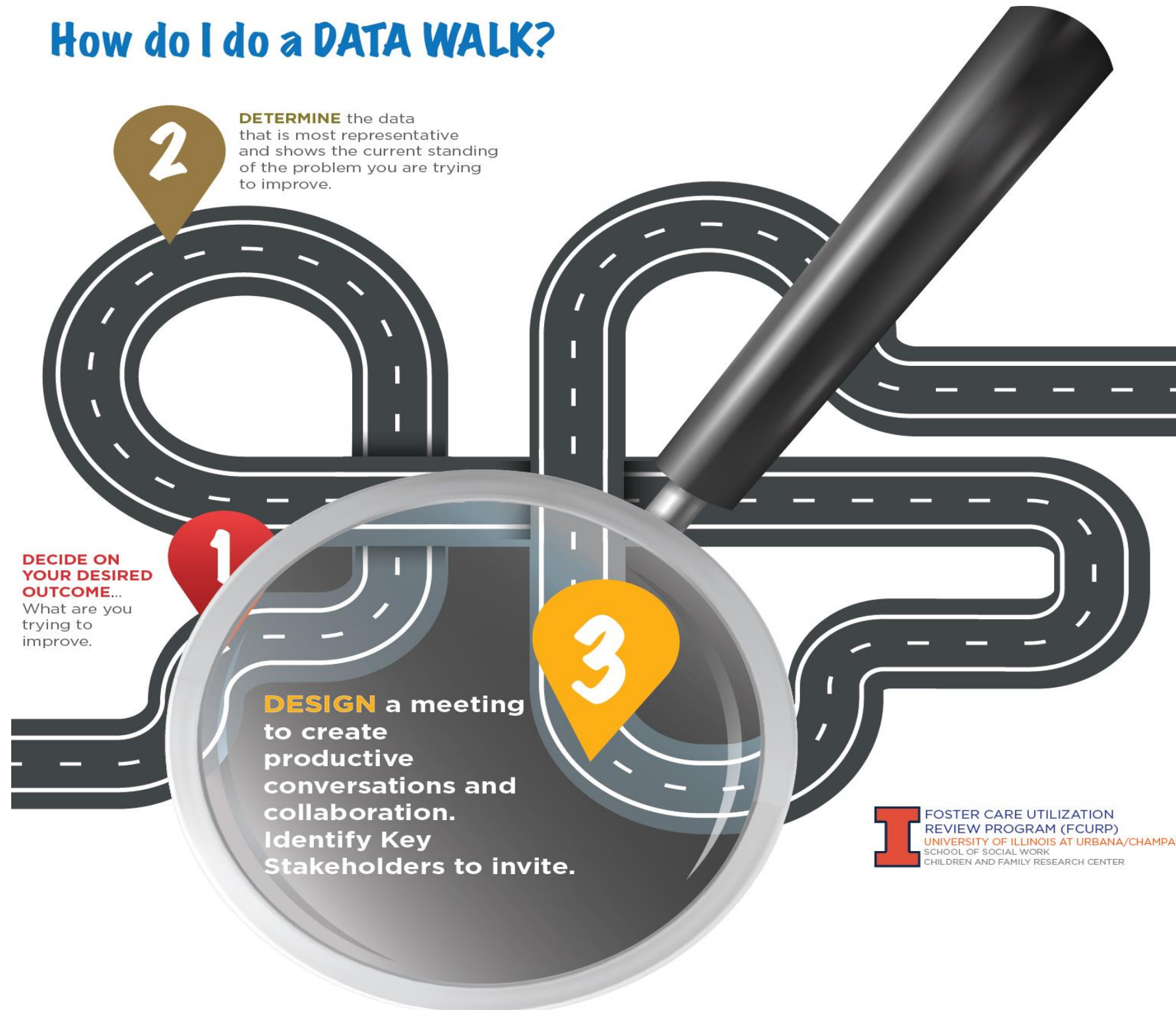
DETERMINE the data that is most representative and shows the current standing of the problem you are trying to improve.

DECIDE ON YOUR DESIRED OUTCOME...
What are you trying to improve.

1



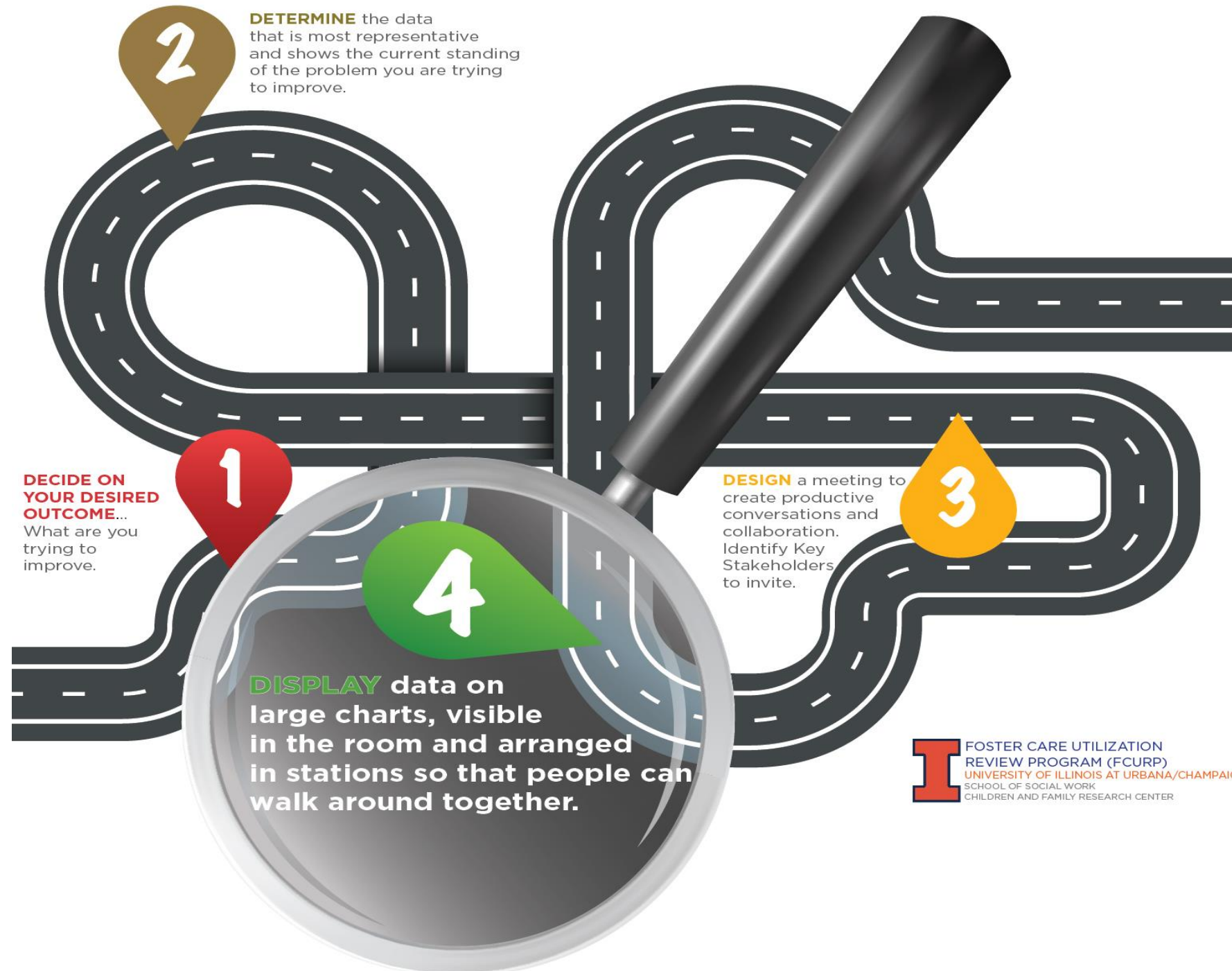
How do I do a DATA WALK?



I FOSTER CARE UTILIZATION REVIEW PROGRAM (FCURP)
UNIVERSITY OF ILLINOIS AT URBANA/CHAMPAIGN
SCHOOL OF SOCIAL WORK
CHILDREN AND FAMILY RESEARCH CENTER



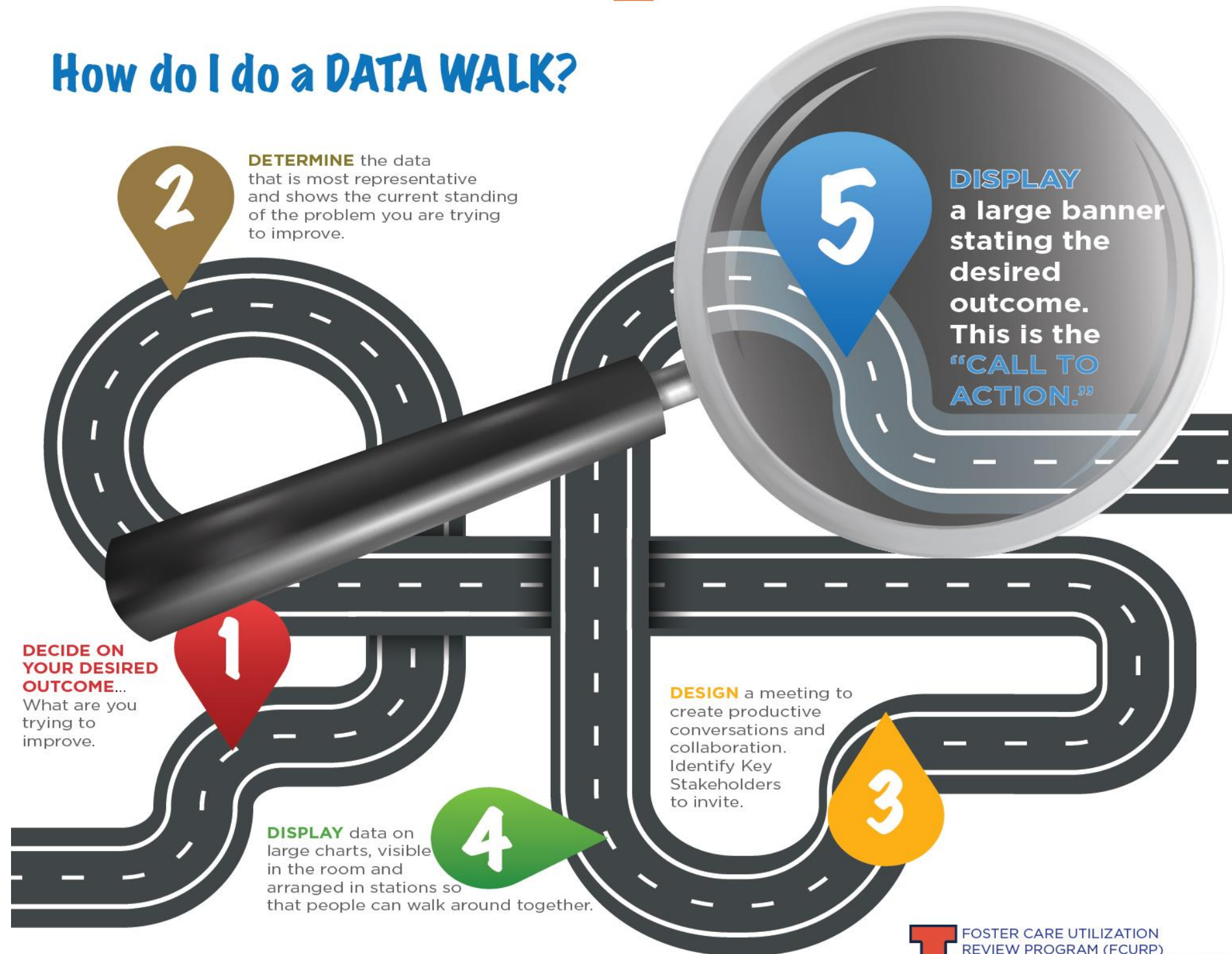
How do I do a DATA WALK?



I FOSTER CARE UTILIZATION
REVIEW PROGRAM (FCURP)
UNIVERSITY OF ILLINOIS AT URBANA/CHAMPAIGN
SCHOOL OF SOCIAL WORK
CHILDREN AND FAMILY RESEARCH CENTER



How do I do a DATA WALK?





How do I do a DATA WALK?





How do I do a DATA WALK?

DIVIDE the room into smaller groups. Go **WALK** the data stations.





DISCUSSION / Q&A

- How could you use a DATA WALK back at your organization?
- What will you take away from this experience of doing a Data Walk?
- Do you have any other questions or thoughts?



THANK YOU FOR COMING!!

Don't forget to complete an evaluation!

Additional Questions?

Contact FCURP at (312) 328-2084

or via email at

jaem@illinois.edu

RESOURCES

- <http://www.urban.org/research/publication/data-walks-innovative-way-share-data-communities>
- <http://www.aecf.org/blog/data-walk-is-a-key-tool-in-results-based-leadership>