



Logic Models: An Effective Program Management Tool



Presenters: Andrea Chua, Melissa Dury, Phyllis Richards

Workshop Overview

- Explore the many benefits of using logic models
- Discuss the four components of a logic model
- Identify practical solutions for successfully using logic models as a program management tool

Poll: In the Room

What is your role at your organization?

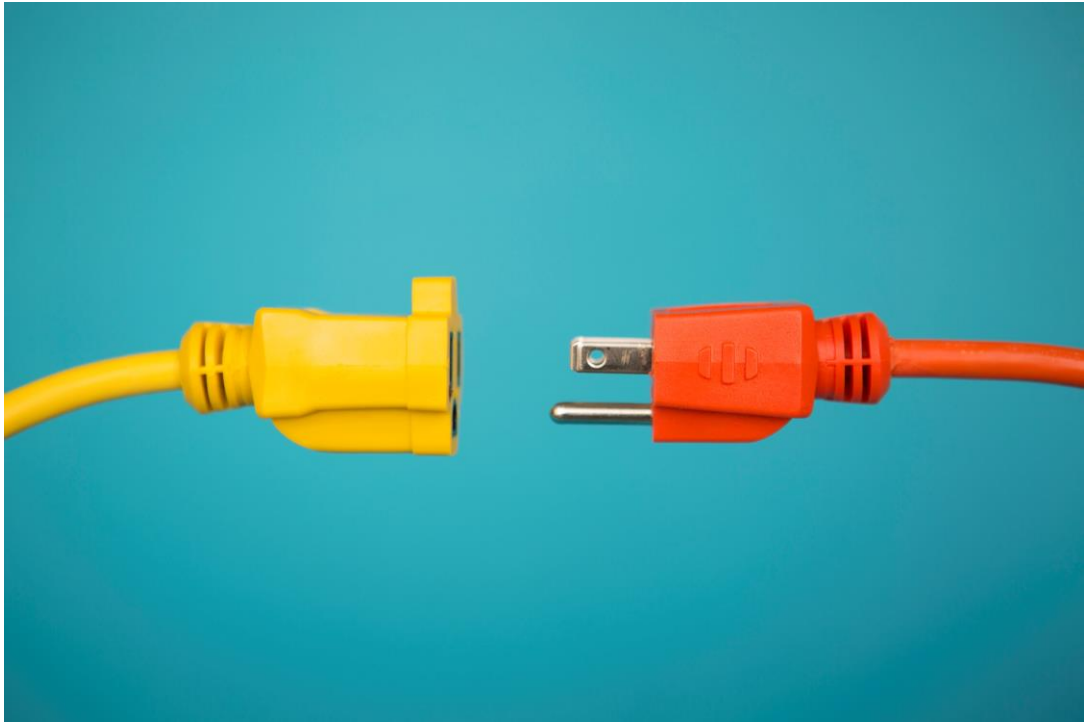


Poll: Your Programs

How many of you are already using logic models within your programs?



Benefits of Using Logic Models



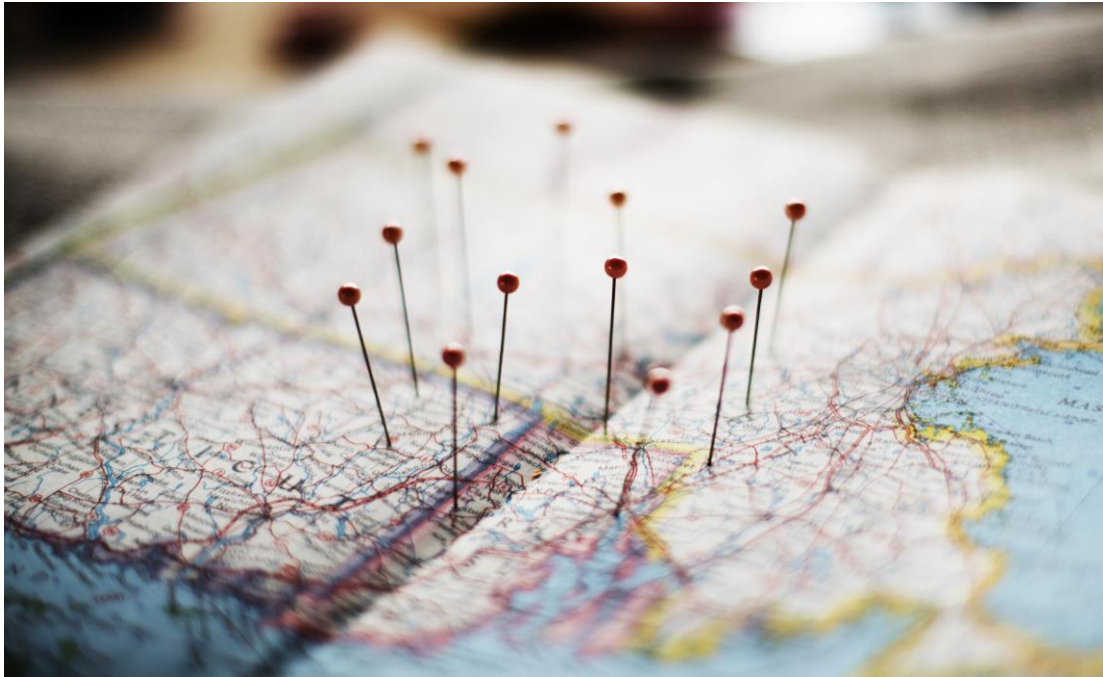
Logic Models Promote a Stronger Connection to the Field

Discussion: Your Thoughts

How are you currently using logic models in your programs?



Benefits of Using Logic Models



Why use logic models?
And why now?

Describes Intended Program Impact Succinctly

Clearly lists the major aspects of program design and provides the rationale for why the program exists.

- Program development
- Program planning



Program Development

- Identify goals/objectives
- Conduct needs assessment
- Secure resources
- Measurement plan

Communicate Program Achievements

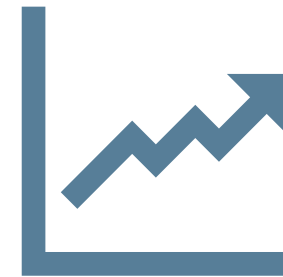
Provides an at-a-glance view of what each program is doing, and achievements made over time.



Short-Term Impact



Medium-Term Impact



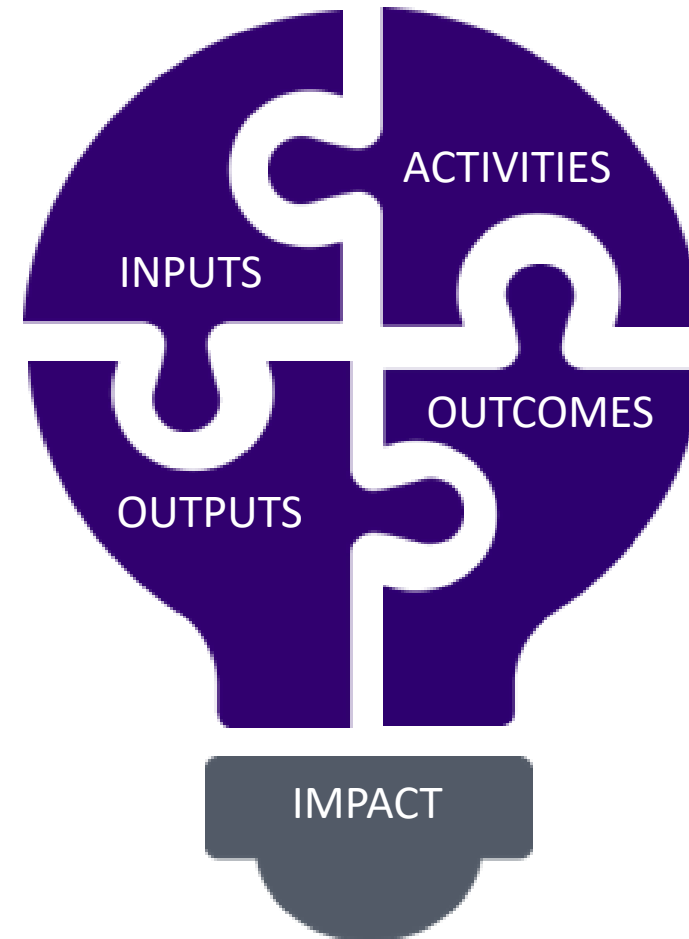
Long-Term Impact



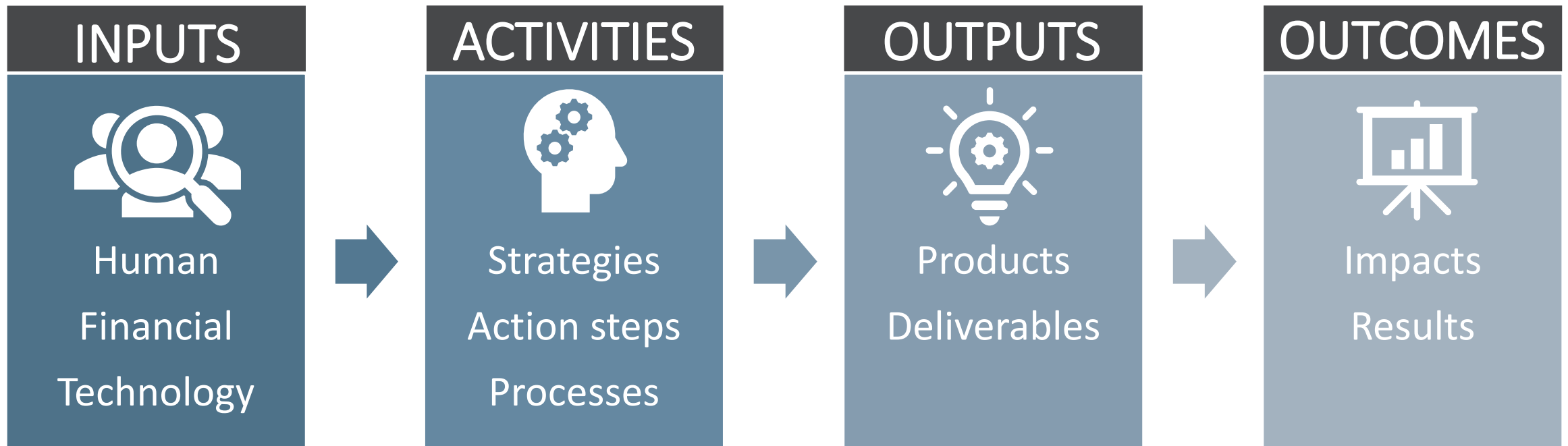
Are Logic Models Complete Doom and Gloom?

Logic Model Components

- What comprises a logic model?



Components of a Logic Model



Outputs | Outcomes | Impact

Impact: The “organizational, community, and/or system level changes expected to result from program activities...”

W.K. Kellogg Foundation



Can You Tell the Difference Between Outputs and Outcomes?



Program Logic Model Guide

INPUTS

- What workforce resources are invested in the program?
- Are there specific aspects of program design essential to service delivery?
- Are there particular models or training critical to program interventions?

OUTPUTS

- What do we produce?
- What are our results?

ACTIVITIES

- Who do we serve and how do we serve them?
- What are the significant tasks done?
- What activities create or lead to impact?

OUTCOMES

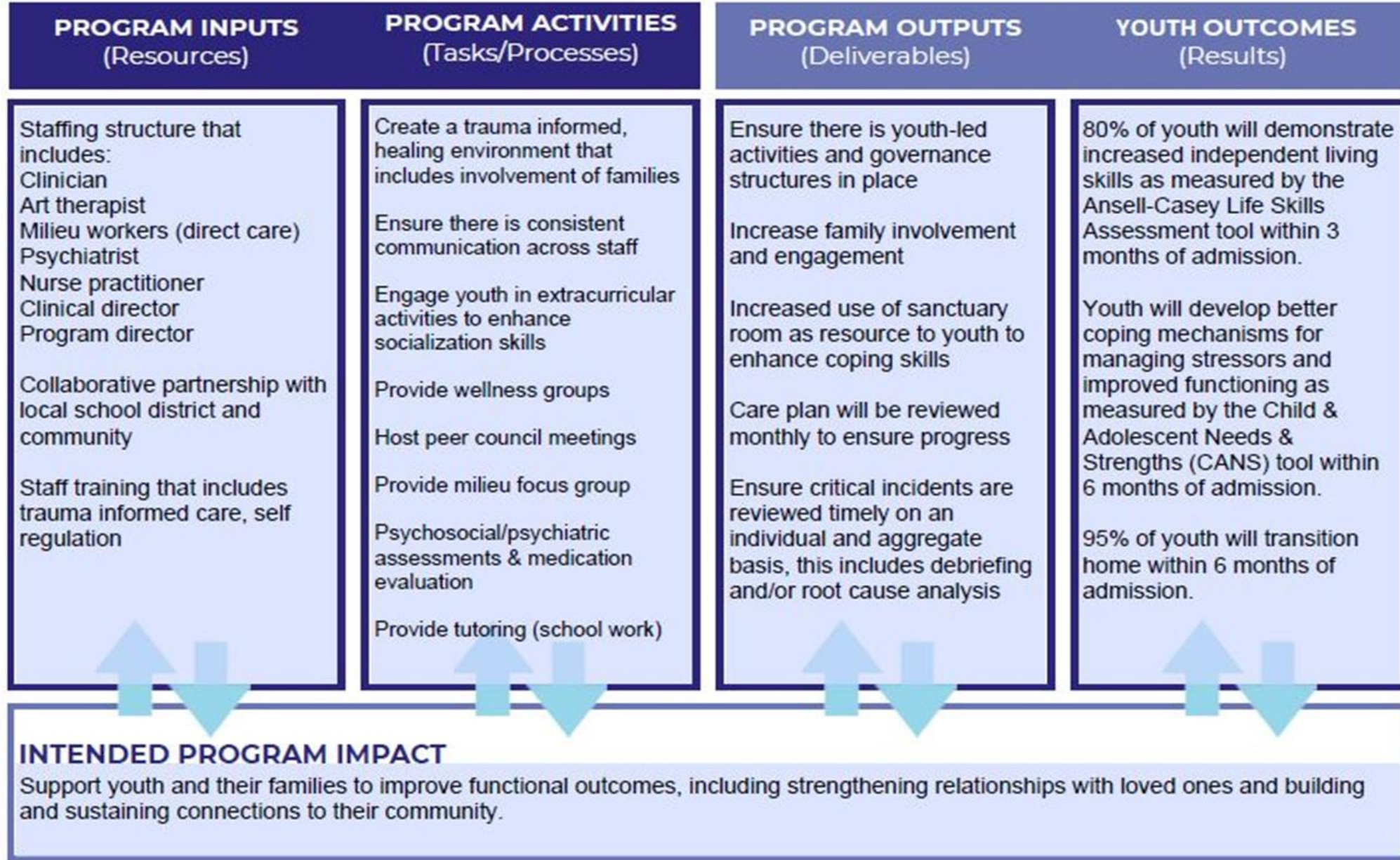
- What are the immediate changes to people?
- What is the impact at the individual, organizational, community and systems level(s)?

ORGANIZATION NAME: ABC123

PROGRAM NAME: Youth Residential Program

PROGRAM PURPOSE: The program works with youth (12-18) to provide comprehensive care in a therapeutic environment.

Residential Treatment Logic Model



Where Should We Start?



Poll: Program Management

Do you use satisfaction data as a form of outcome measurement?



Participatory Approach

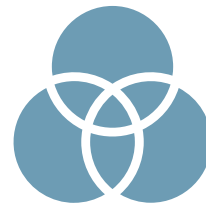
- How to amplify the voices of staff and persons served.
- Engage and elevate all stakeholders in partnership with community-based supports and systems.

Define Metrics and Allocate Resources

- The logic model can be used to assess progress over time and define units of measurement for outputs and outcomes.
- Logic models serve as a mechanism to demonstrate how a program functions and is aimed at meeting the needs of its clients.

Point of Reference

What **should** be measured **vs.** What **is** measured



Discussion: Potential Stumbling Blocks



Resources

- [Alliance-COA Logic Model Template](#)
- [Community Tool Box: Developing a logic model or theory of change](#)
- [Sample Logic Model: Healthy Futures](#)
- [Social Impact Architects](#)
- [Top Questions on Logic Models](#)
- [W.K. Kellogg Guide](#)

Thank you!





Register Now
Oct. 12-14 | Virtual

Activate the Power of the Social Sector